

Bob Lake Association

Safe Boating Work Group

The survey of members carried out by the BLA in 2018 identified concerns related to boating practices (e.g., excessive speed and wakes in areas close to shore and docks). At the 2018 annual general meeting, a safe boating work group was tasked with bringing forward to the Board a proposal to address these concerns. The following summarizes the recommendations of the work group regarding both high priority slow/no wake zones and boating hazards such as unmarked shoals and rocks. Additionally, the OPP have been approached for their suggestions.

1. Marker Proposal

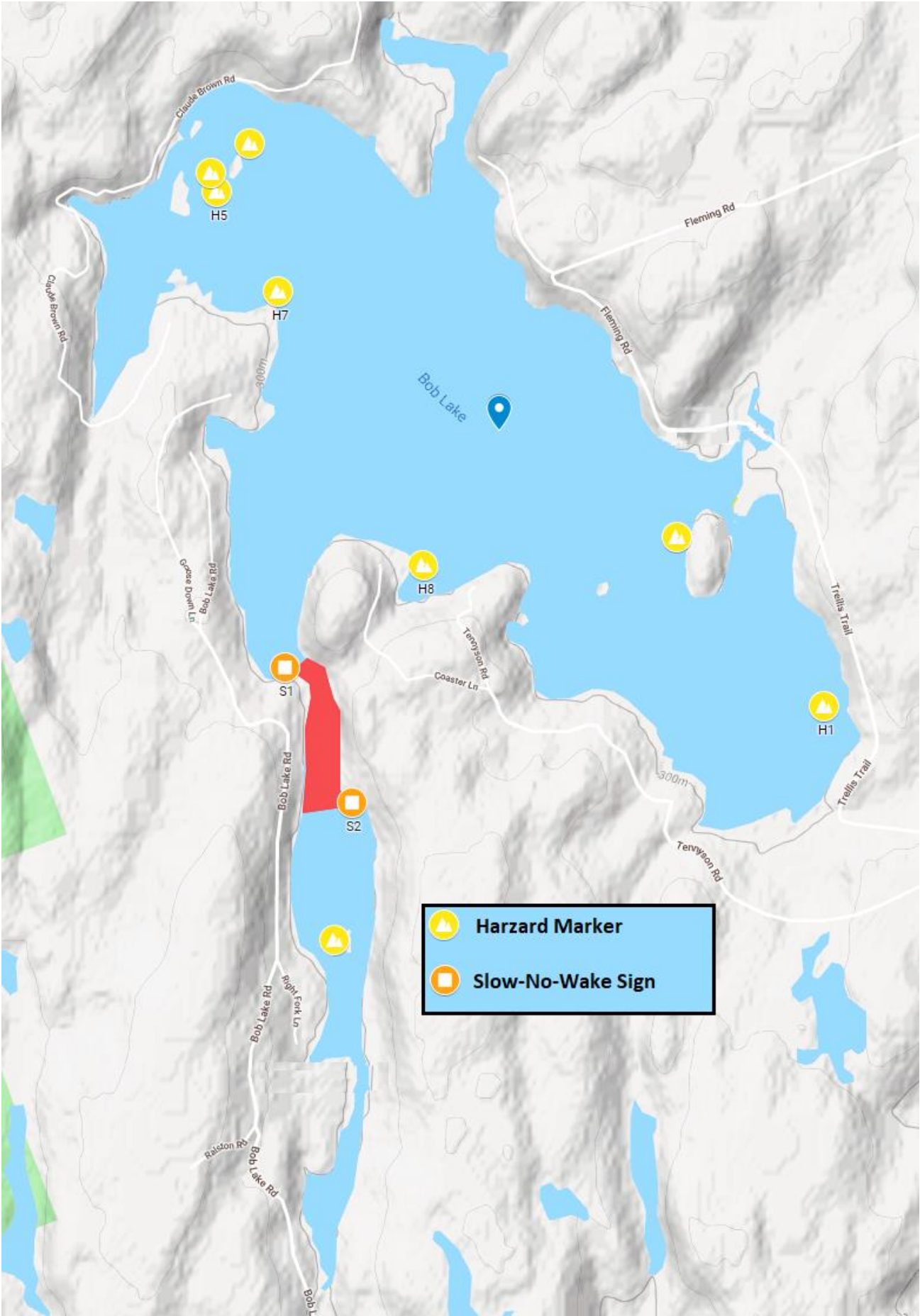
- Based on a costing spreadsheet produced by Dave Roberts, the Work Group proposes to introduce speed and hazard warning markers and signage over three phases to spread out the costs (*see page 3 for breakdown*):
 - Phase 1: eight hazard buoys to mark shoals and rocks. Two Slow/No Wake signs at first narrows (*see map on page 2*). Cost: \$1,500.
 - Phase 2: two Slow/No Wake buoys at the first narrows and one at the entrance to Bob Creek. No signage in Phase 2. Cost: \$2,000.
 - Phase 3: one Slow/No Wake buoy at second narrows and one up in Bob Creek (optional, depending on success with first buoy in this area). One Slow/No Wake sign at second narrows. Cost: \$1,500.
 - Total cost (no inflation has been added): \$5,000.
- If the placement of the Phase 1 signs at the first narrows has the desired impact on traffic through this area, the need for two buoys here may be precluded. This would reduce the above costs by at least \$1,200. Individual cottage owners may wish to “sponsor” these signs, providing an additional saving to the BLA but the signs would identify the Bob Lake Association as the responsible party.
- A sign may be optionally considered for Bob Creek at an approximate cost of \$200.
- An additional fee of \$75 per annum will be charged by the BLA’s insurance company to cover any liability to the Association and its volunteers resulting from the installation of buoys and signage.

2. Marine Safety Presentation to the AGM

- Laura Evans has booked OPP Marine Officer Timothy Negus to make a presentation to the AGM concerning boating safety. In addition to marine safety, Officer Negus will also address crime/break and enter reduction strategies and the SAFEGUARD program for target hardening.

Safe Boating Work Group
March 3, 2019

Phase 1 Markings Map



Cost Details

Cost Components

Item #	Item Description	Vendor	Unit Cost	Shipping	HST	Total Unit	Comment
1	Slow-No-Wake Speed Signs	County Sign & Display	\$140.00		13%	\$158.20	Pricing from Jeff Papiez
2	Slow-No-Wake Buoys	Go Deep International	\$385.00	\$110.00	13%	\$559.35	See quote. Shipping cost estimate based on 3 buoys for \$330.
3	Hazard Buoys	Go Deep International	\$39.00	\$18.75	13%	\$65.26	See quote. Shipping cost estimate based on 8 buoys for \$150.
4	Stainless Steel Chain (per ft)	Home Depot	\$2.00		13%	\$2.26	Estimate based on 30' for \$40
5	Stainless Steel Clips	Home Depot	\$5.00		13%	\$5.65	SWAG
6	Concrete Bocks	Home Hardware	\$25.00		13%	\$28.25	SWAG

Phase 1 Cost Estimates

Qty	Item Description	Total Cost	Comment
2	Slow-No-Wake Speed Signs	\$316.40	Affixed to trees on the north & south end of the 1st narrows - see attached image
0	Slow-No-Wake Buoys	\$0.00	No Slow-no-Wake Buoys in phase 1
8	Hazard Buoys	\$522.06	Buy all 8 hazard buoys in phase 1
120	Stainless Steel Chain (per ft)	\$271.20	Assuming 15' per buoy
16	Stainless Steel Clips	\$90.40	2 clips per buoy
8	Concrete Bocks	\$226.00	1 bock per buoy
		\$1,426.06	

Phase 2 Cost Estimates

Qty	Item Description	Total Cost	Comment
0	Slow-No-Wake Speed Signs	\$0.00	No signs in phase 1
3	Slow-No-Wake Buoys	\$1,678.05	North + south end of first narrows + one entering Bob Creek
0	Hazard Buoys	\$0.00	No hazard buoys in phase 1
45	Stainless Steel Chain (per ft)	\$101.70	Assuming 15' per buoy
6	Stainless Steel Clips	\$33.90	2 clips per buoy
3	Concrete Bocks	\$84.75	1 bock per buoy
		\$1,898.40	

Phase 3 Cost Estimates

Qty	Item Description	Total Cost	Comment
1	Slow-No-Wake Speed Signs	\$158.20	Entering into 2nd narrows
2	Slow-No-Wake Buoys	\$1,118.70	One at top of second narrows and one in Bob Creek
0	Hazard Buoys	\$0.00	No hazard buoys in this phase
30	Stainless Steel Chain (per ft)	\$67.80	Assuming 15' per buoy
4	Stainless Steel Clips	\$22.60	2 clips per buoy
2	Concrete Bocks	\$56.50	1 bock per buoy
		\$1,423.80	

Lake Marker Samples

Hazard Buoy



Slow/No-Wake Buoy



Speed/No-Wake Sign

